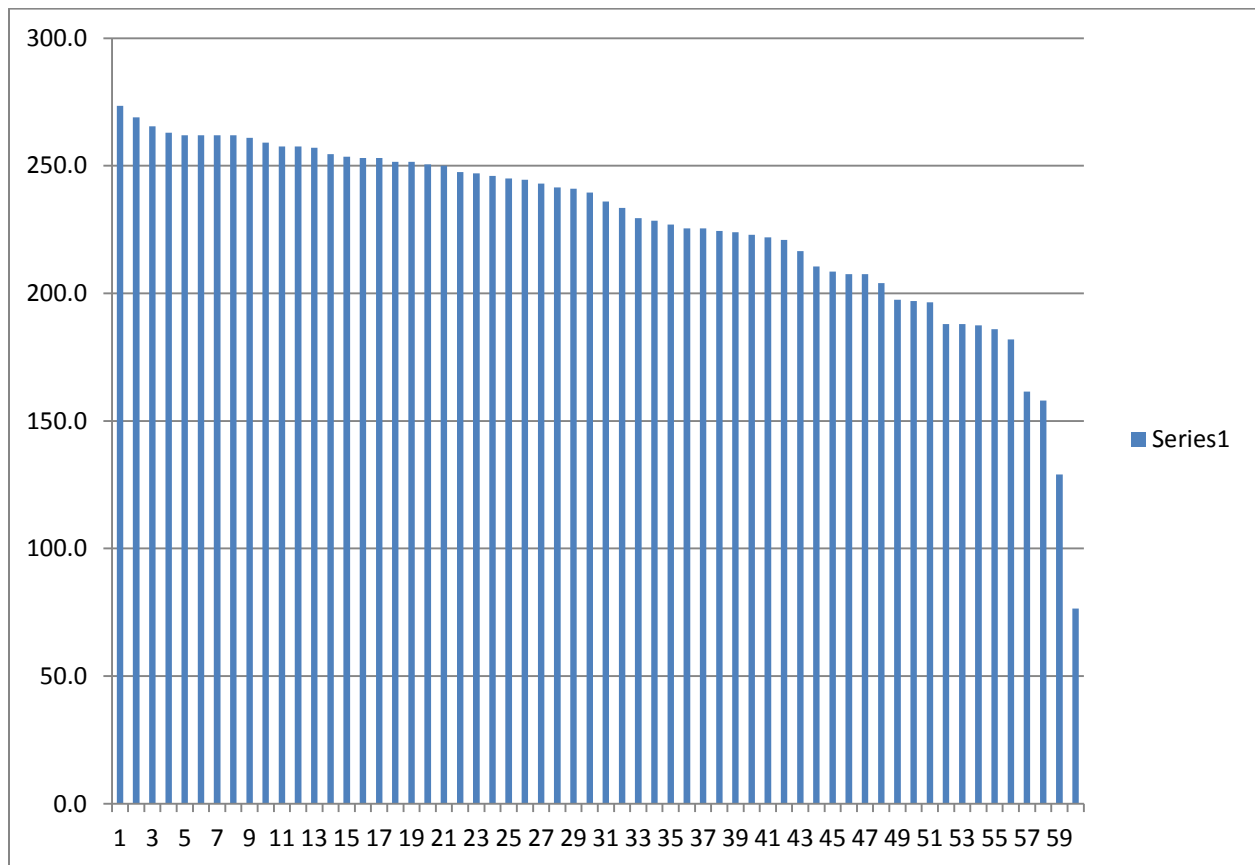


## CH 370 F2012 - Results thru HW1, EX1, HW2, EX2 and BLAST Assignments

|        | A          | B          | C          | D          |
|--------|------------|------------|------------|------------|
| HW-1   | 18         | 16         | 14         | 12         |
| EXAM 1 | 88         | 76         | 63         | 50         |
| HW-2   | 18         | 16         | 14         | 12         |
| EXAM 2 | 88         | 75         | 62         | 50         |
| BLAST  | 36         | 32         | 28         | 24         |
|        | <b>248</b> | <b>215</b> | <b>181</b> | <b>148</b> |

(280 possible points)



### Exam 1

High Score = **100** / Low Score = **41.5** / Average = **81.5**  
 Initial Grade Breaks: **A (88) / B (76) / C (63) / D (50)**

### Exam 2

High Score = **97** / Low Score = **35** / Average = **77.2**  
 Initial Grade Breaks: **A (88) / B (75) / C (62) / D (50)**

\*\*\*\*\*

Note: Graded HW, BLAST project, and term paper (WC) will be graded on a straight 90%, 80%, 70%, 60%